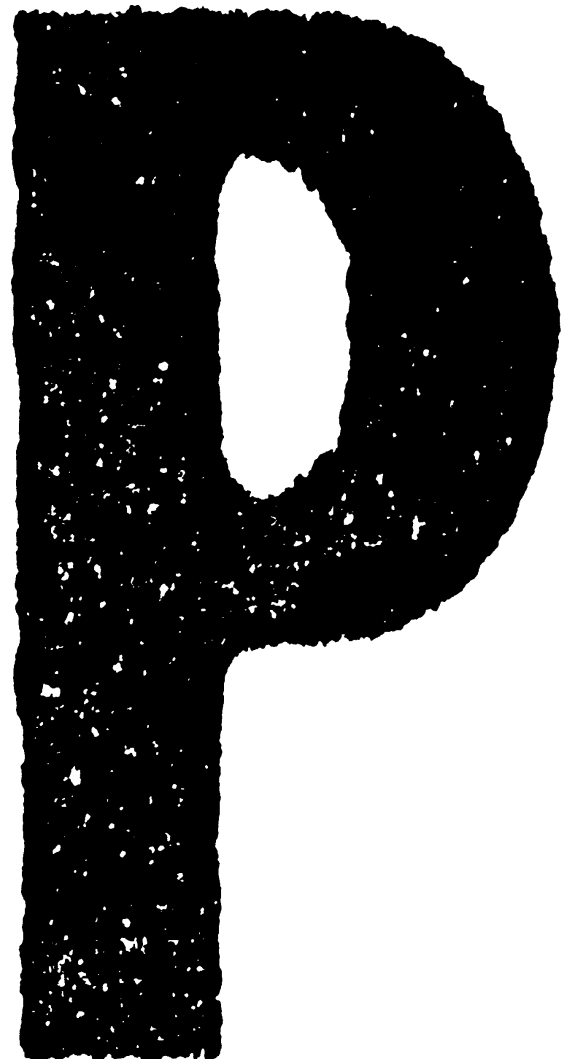


TOSHIBA

SERVICE PARTS LIST

AUTOMATIC DUPLEXING UNIT

MD-0101



Copyright 2000

TOSHIBA TEC CORPORATION

EXPLANATION OF SERVICE-PARTS LIST

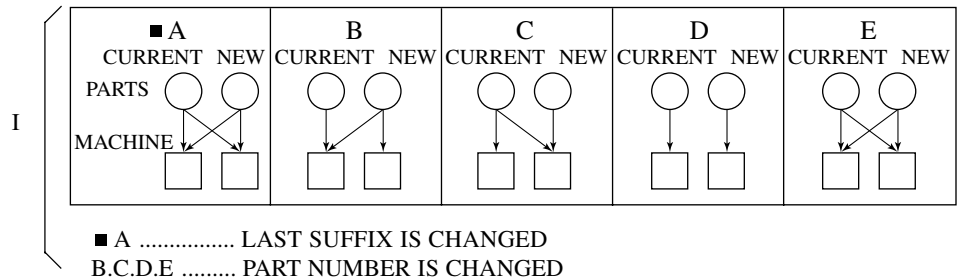
1. HOW TO READ THE PARTS LIST

- (1) Number of pieces
The number of pieces in the list denotes total pieces used per unit. But the numbers in the list for PACKING MATERIAL and ACCESSORY denote total pieces used per machine.
- (2) One pack of screws in the list includes 50 pieces.
- (3) ABBREVIATED CODES

QTY/PAC	QTY	one piece
	PAC	one pack
	1/P	one piece packed in polyethylene bag
	1/S	one piece packed in special pack
	1/C	one piece packed in carton box
	1/PP	one piece packed in paper and polyethylene bag
	1/KP	one piece packed in polyethylene bag with cardboard
	1/D	one piece packed in polyethylene-cushion bag
1/SB	one piece packed in shielding bag	
N/A	not available	

P	P	PURPOSE
	A	ADD
	B	DELETE
	C	CHANGE
	D	QTY, CHANGE
	E	MISENTRY
	F	OMISSION

I INTERCHANGEABILITY STATUS



■ A LAST SUFFIX IS CHANGED
B.C.D.E PART NUMBER IS CHANGED

2. HOW TO PLACE ORDER FOR PARTS

- (1) The parts handled as service parts are only those with their "QTY/PACK" column listed with a quantity other than "N/A***" or "SUPPLY".
Those parts with "N/A***" are listed only for the purpose of showing the mechanical construction, those listed with "SUPPLY" are handled only as a sales item, and therefore both types of parts are not supplied as service parts.
- (2) Orders for any parts which form a component of a semi-assembled unit are not acceptable.
Note: All the screws and nuts used are ISO standard.

3. REGION

NAD	115V/60Hz, UL & CSA
TWD	110V/60Hz, TAIWAN
SAD	127V/60Hz, SAUDI ARABIA
ASD	220V
	50/60Hz, ASIA, etc.
AUD	240V/50Hz, AUSTRALIA
MJD	230-240V
	50/60Hz, EUROPE
UKD	230-240V
	50/60Hz, UNITED KINGDOM

NOTICE EXPLICATIVE DE LA LISTE DES PIÈCES DE RECHANGE

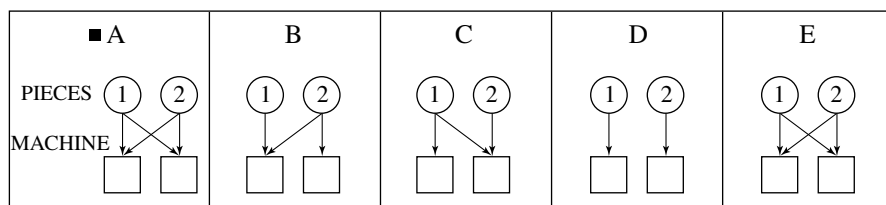
1. COMMENT UTILISER LA LISTE DES PIÈCES DE RECHANGE

- (1) Nombre de pièces
Le nombre de pièces indiqué sur la liste est le nombre total de pièces utilisées pour chaque unité.
Toutefois, le nombre indiqué sur la liste EMBALLAGE ACCESSOIRES est le nombre total de pièces utilisées pour chaque machine.
- (2) Un paquet de vis indiqué sur la liste contient 50 vis.
- (3) ABREVIATIONS

Q'TY/PAC	{	QTY une pièce
		PAC un paquet
		1/P une pièce emballée dans un sac en polyéthylène
		1/S une pièce emballée dans un sac spécial
		1/C une pièce emballée dans une boîte en carton
		1/PP une pièce emballée dans un sac en papier et en polyéthylène
		1/KP une pièce emballée dans un sac en polyéthylène avec carton
		1/D une pièce emballée dans un sac rembourré en polyéthylène
		1/SB une pièce emballée dans
N/A*** non disponible		

P	{	P BUT
		A AJOUTER
		B SUPPRIMER
		C MODIFIER
		D CHANGEMENT DE QUANTITE
		E INSCRIPTION ERRONEE
		F OMISSION

I INTERCHANGEABILITE



① ACTUELLE ② NOUVELLE
 ■ A LE DERNIER SUFFIXE EST CHANGE
 B.C.D.E LE NOMBRE DE PIÈCES EST CHANGE

2. COMMENT COMMANDER LES PIÈCES

- (1) Les pièces de rechange sont uniquement celles qui sont mentionnées dans la colonne "Q'TY/PACK" avec une quantité autre que "N/A***" ou "SUPPLY".
Les pièces dans la colonne "N/A***" sont mentionnées uniquement dans le but d'indiquer la construction mécanique. Les pièces dans la colonne "SUPPLY" sont destinées uniquement à la vente. Par conséquent, ces deux types de pièces ne sont pas fournies en tant que pièces de rechange.
- (2) Les commandes de toute pièce formant un élément ou une unité semi-assemblée ne seront pas acceptées.
Nota: Toutes les vis et touts le écrous seront conformes au code ISO.

3. PAYS

NAD	115V/60Hz, UL & CSA
TWD	110V/60Hz, TAIWAN
SAD	127V/60Hz, ARABIE SAOUDITE
ASD	220V
	50/60Hz, ASIE, etc.
AUD	240V/50Hz, AUSTRALIE
MJD	230-240V
	50/60Hz, EUROPE
UKD	230-240V
	50/60Hz, ROYAUME-UNI

ERKLÄRUNG DES ERSATZTEIL-KATALOGES

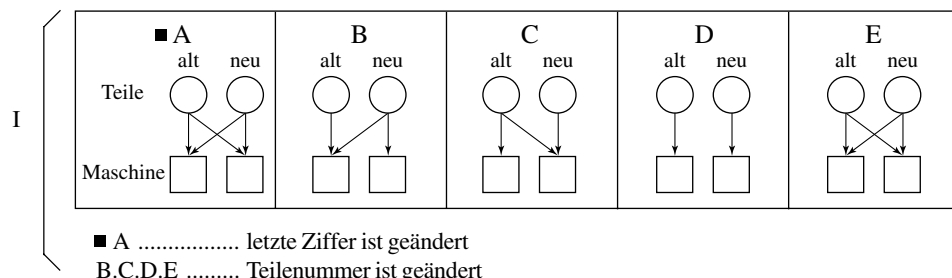
1. WIE LIEST MAN DIE TEILELISTE?

- (1) Die Teileanzahl
Die Anzahl der Teile in der Liste, drücken die gesamten Teile pro Verpackungseinheit aus. Aber die Zahl in der Liste "Packing" (Verpackung) und "Accessory" (Zubehör) beschreibt die gesamte Teileanzahl pro Maschine.
- (2) Eine Verpackungseinheit SCHRAUBEN enthält 50 Stück.
- (3) Abkürzungscode

QTY/PAC	{	QTY	Stück
		PAC	Packung
		1/P	ein Stück in einem Plastikbeutel
		1/S	ein Stück in einer Spezialverpackung
		1/C	ein Stück in einem Karton
		1/PP	ein Stück in Papier und einem Plastikbeutel
		1/KP	ein Stück in einem Plastikbeutel mit Pappdeckel
		1/D	ein Stück in einem gepolsterten Plastikbeutel
N/A	nicht lieferbar		
1/SB	ein Stück in einer Schutzhülle		

P	{	P	Zweck
		A	Zusätzlich
		B	Entfernen
		C	Ändern
		D	Menge geändert
		E	Fehlangebe
		F	Weglassen

I Austauschbar untereinander



2. WIE WERDEN ERSATZTEILE BESTELLT?

- (1) Die Ersatzteile für den Service haben in der Spalte "QTY/PACK" eine Nummer.
Die Teile mit der Angabe "N/A***" sind nur aufgeführt, um die technische Konstruktion zu zeigen und sind einzeln nicht lieferbar.
Die Bezeichnung "SUPPLY" weist darauf hin, daß dieses Teil als Zubehör gehandelt wird und beim Verkauf bestellt werden muß.
- (2) Bestellungen für Einzelteile, die einer Baueinheit angehören können nicht akzeptiert werden.
Hinweis: Alle Schrauben und Muttern werden nach dem ISO-Standard hergestellt.

3. REGION

NAD	115V/60Hz, UL & CSA
TWD	110V/60Hz, TAIWAN
SAD	127V/60Hz, SAUDI-ARABIEN
ASD	220V 50/60Hz, ASIEN, usw.
AUD	240V/50Hz, AUSTRALIEN
MJD	230-240V 50/60Hz, EUROPA
UKD	230-240V 50/60Hz, GROSSBRITANNIEN

SPIEGAZIONE DELLA LISTA DEI PEZZI DI RICAMBIO

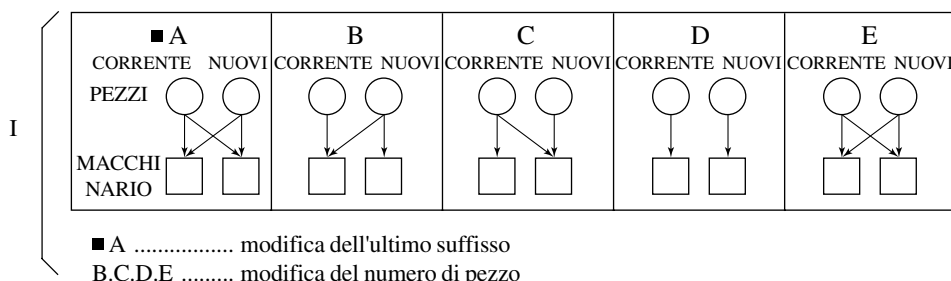
1. COME LEGGERE LA LISTA DEI PEZZI DI RICAMBIO

- (1) Numero dei pezzi
Il numero dei pezzi indica il totale dei pezzi per elemento. I numeri nella lista del materiale d'imballaggio e accessori indicano il totale dei pezzi per macchina.
- (2) Nella lista, un pacco di viti contiene 50 viti.
- (3) ABBREVIAZIONI

QTY/PAC	QTY	un pezzo
	PAC	un pacco
	1/P	un pezzo imballato in sacco di polietilene
	1/S	un pezzo imballato in pacco speciale
	1/C	un pezzo imballato in scatola di cartone
	1/PP	un pezzo imballato in sacco di polietilene e carta
	1/KP	un pezzo imballato in sacco di polietilene con cartone
	1/D	un pezzo imballato in sacco morbido di polietilene
	1/SB	un pezzo imballato in sacco di protezione
	N/A	non disponibile

P	P	scopo
	A	aggiunta
	B	annullamento
	C	modifica
	D	modifica QTY
	E	ingresso errato
	F	omissione

I stato di intercambiabilità



2. ORDINAZIONE DEI PEZZI

- (1) I pezzi usati come pezzi di ricambio sono elencati nella colonna "QTY/PACK" con una quantità differente da "N/A****" o "SUPPLY".
I pezzi con "N/A****" sono elencati solamente per mostrare la costruzione meccanica e quelli con "SUPPLY" sono elencati solamente come articoli di vendita: ciò significa che questi due tipi di pezzi non sono forniti come pezzi di ricambio.
- (2) L'ordinazione dei pezzi non viene accettata quando questi pezzi formano un componente di un messo elemento.
Nota: Tuttle le viti e i dadi sono standard ISO.

3. NAZIONE

NAD	115V/60Hz, UL & CSA
TWD	110V/60Hz, TAIWAN
SAD	127V/60Hz, ARABIA SAUDITA
ASD	220V 50/60Hz, ASIA, ecc.
AUD	240V/50Hz, AUSTRALIA
MJD	230-240V 50/60Hz, EUROPA
UKD	230-240V 50/60Hz, GRAN BRETAGNA

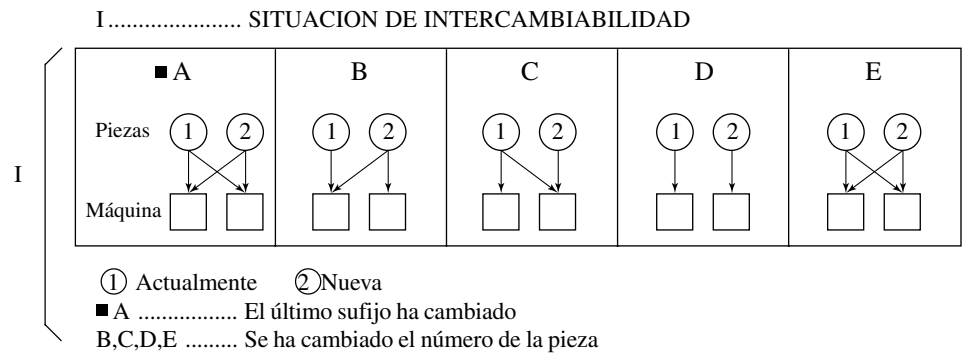
EXPLICACION DE LA LISTA DE PIEZAS DE SERVICIO

1. Cómo se lee la lista de piezas

- (1) El número de piezas
El número de piezas en la lista especifica las piezas totales usada pou unidad, mientras que el número en la lista para MATERIAL DE EMBALAJE y ACCESORIOS especifica las piezas totales usadas por máquina.
- (2) En el paquete de tornillos se incluyen 50 unidades.
- (3) Códigos abreviados

QTY/PAC	{	QTY	una pieza
		PAC	una paquete
		1/P	una pieza empaquetada en la bolsa de politileno
		1/S	una pieza empaquetada en paquete especial
		1/C	una pieza empaquetada en caja de cartón
		1/PP	una pieza empaquetada en papel y bolsa de politileno
		1/KP	una pieza empaquetada en bolsa de politileno con cartón
		1/D	una pieza empaquetada en bolsa almohadillada de politileno
1/SB	una pieza empaquetada en una		
N/A	bolsa protegida		

P	{	P	PROPOSITO
		A	AÑADIR
		B	BORRAR
		C	CAMBIO
		D	CANTIDAD, CAMBIO
		E	ENTRADA ERRONEA
		F	OMISION



2. Cómo realizar un pedido de piezas

- (1) Las piezas consideradas como piezas de servicio son sólo aquellas designadas con Q'TY/PACK y no las designadas con N/A ... o SUPPLY.
Aquellas piezas con N/A ... se ponen en lista sólo con el propósito de mostrar la construcción mecánica. Aquéllas piezas designadas bajo SUPPLY se consideran sólo como un artículo para ventas y por lo tanto ambos tipos de piezas no se consideran como piezas de servicio.
- (2) Los pedidos para cualquier pieza que forme un componente de la unidad semiensamblada no será aceptados.
NOTA: todos los tornillos y tuercas son del estandar ISO.

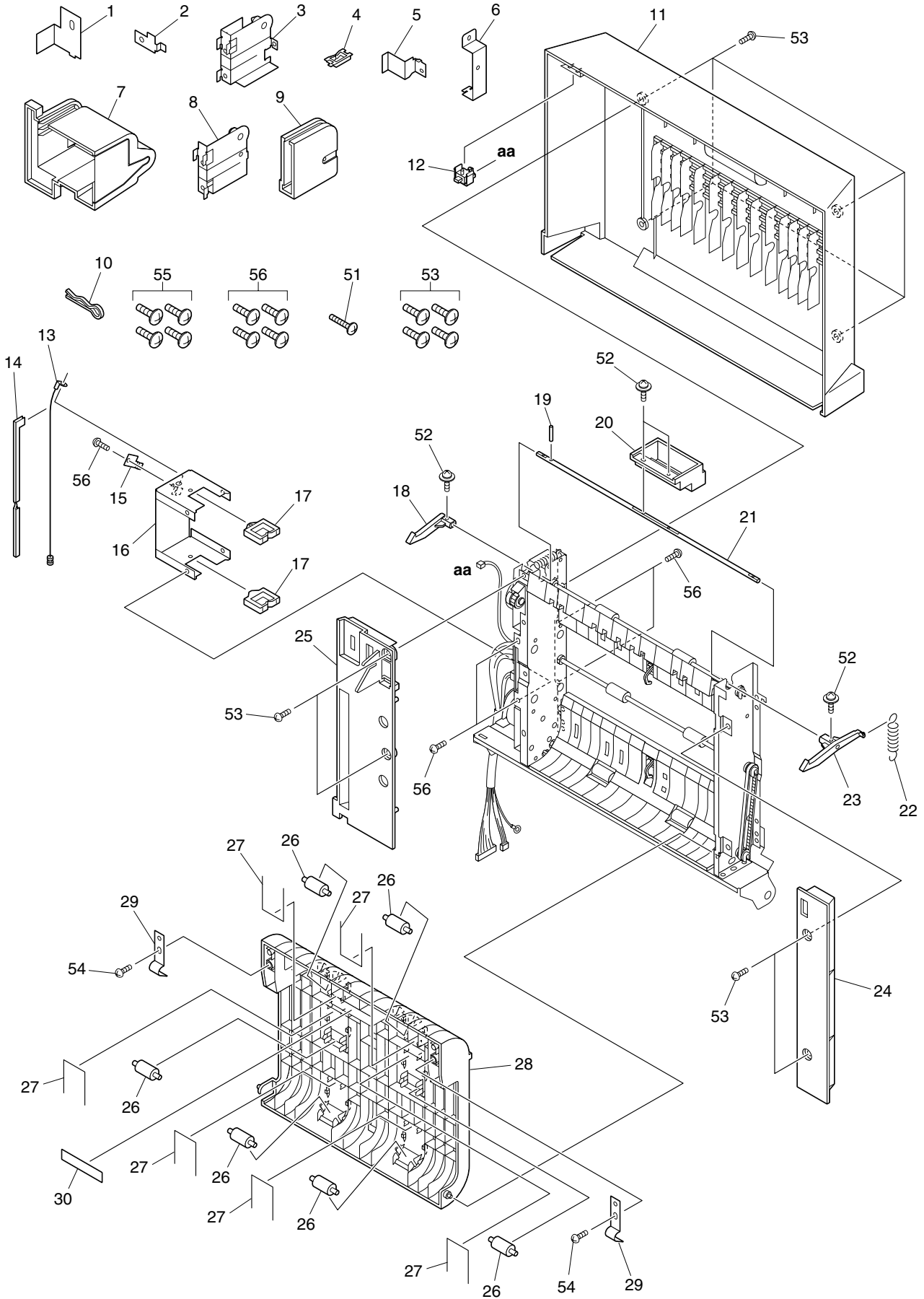
3. PAISES

NAD	115V/60Hz, UL & CSA
TWD	110V/60Hz, TAIWAN
SAD	127V/60Hz, SAUDI ARABIA
ASD	220V
	50/60Hz, ASIA, etc.
AUD	240V/50Hz, AUSTRALIA
MJD	230-240V
	50/60Hz, EUROPA
UKD	230-240V
	50/60Hz, GRAN BRETAÑA

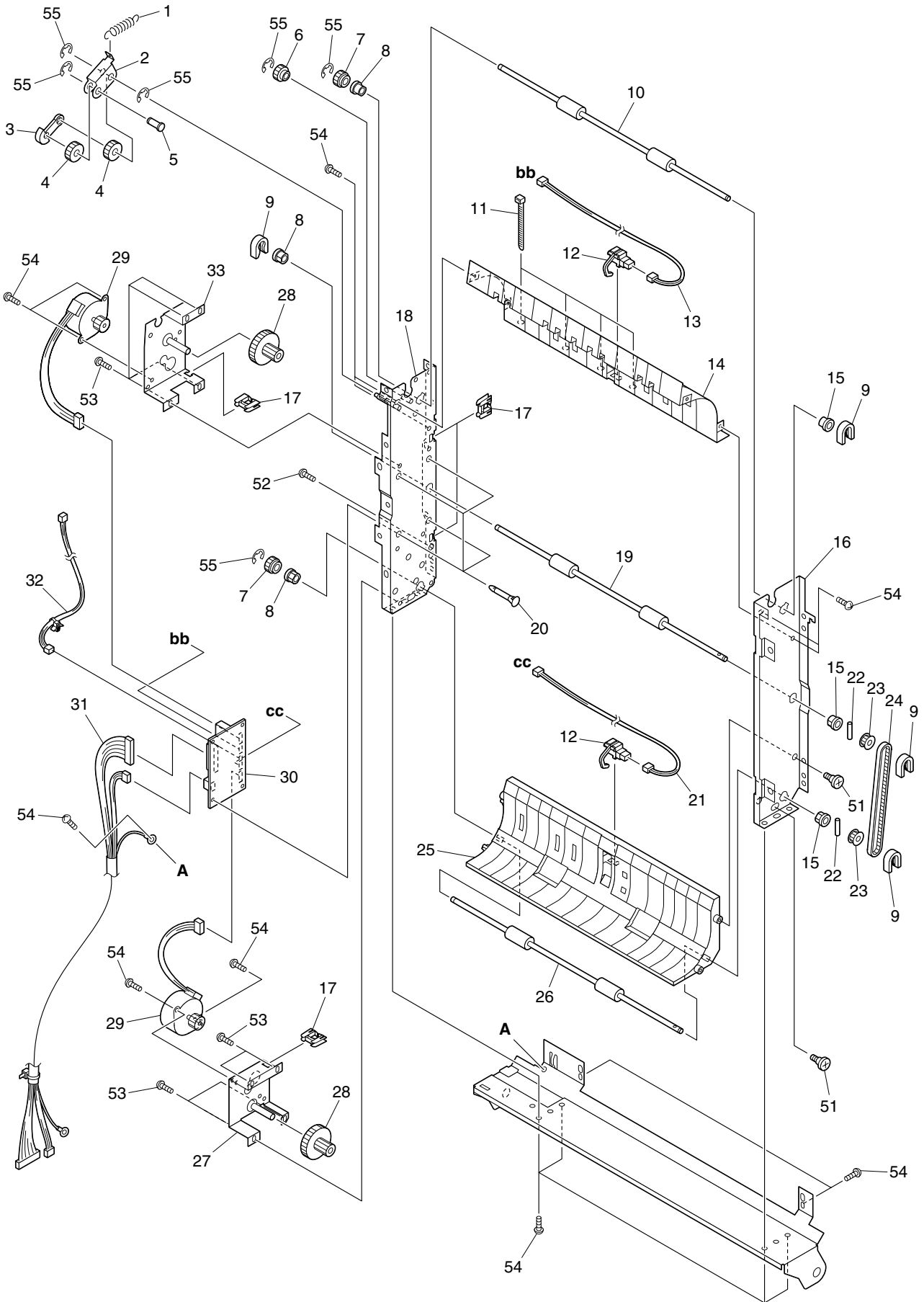
CONTENTS

ASM-COVER	1
ASM-DRIVE	2
PWA-ADU	3

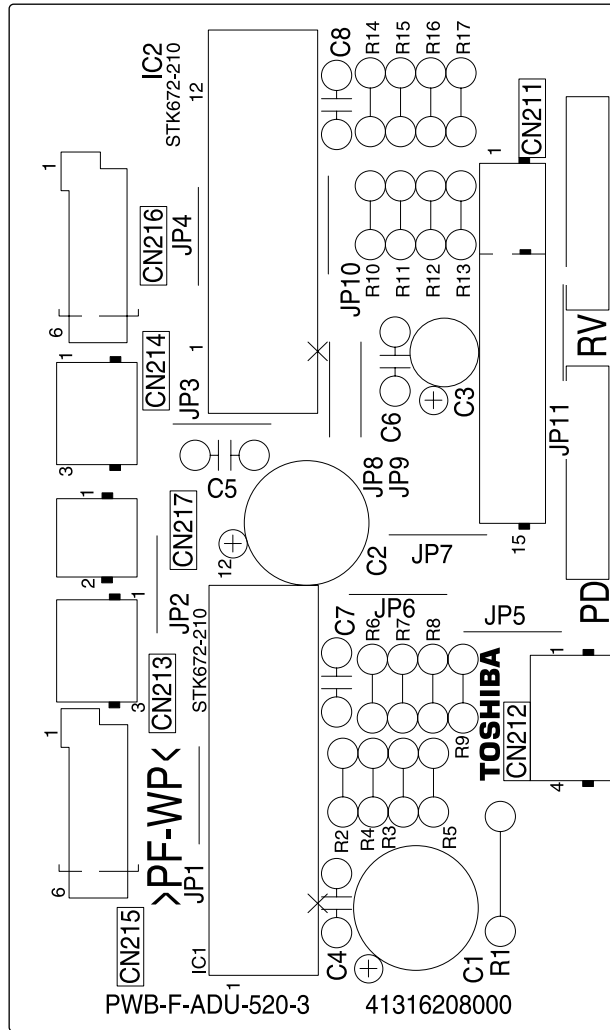
PARTS NUMBER INDEX



ITEM NO.	PARTS NO.	PARTS NAME	Q'TY / PAGE	Q'TY / PACK	PIR	BSI NO.	TO	FROM	SERIAL NO.	REMARKS	C
1	41316125000	BRKT-SW	1	1/P							
2	41316120000	BRKT-COV-WIRE-2	1	1/P							
3	41316113000	K-BRKT-HINGE-R	1	1/P							
4	4843390942	BD/W-EDS-2	1	10/P							
5	41316127000	BRKT-JOINT-STPR	1	1/P							
6	41316051000	BRKT-WH-ADU-R	1	1/P							
7	41316122000	COV-HINGE-R	1	1/P							
8	41316108000	K-BRKT-HINGE-F	1	1/P							
9	41316121000	COV-HINGE-F	1	1/P							
10	41316126000	SNAP-PIN-10	1	5/P							
11	41316080000	CASE-ADU	1	1/PP							
12	4402859600	SP-CS3A-B2BA	1	1/D							
13	41316072000	WIRE-STP-ADU	1	1/P							
14	41316074000	GUIDE-WIRE	1	1/P							
15	41316073000	BRKT-COV-WIRE-1	1	1/P							
16	41316070000	BRKT-WIRE	1	1/P							
17	4843391240	BD/W-EDS-2323U	2	5/P							
18	41316056000	LEVER-LATCH-R	1	1/P							
19	4842904010	NPIN20/16SUS	1	50/P							
20	41316058000	LEVER-OPEN	1	1/P							
21	41316057000	SHAFT-OPEN	1	1/P							
22	41316064000	SPE-068-070-241	1	1/P							
23	41316055000	LEVER-LATCH-F	1	1/P							
24	41316085000	COVER-INSIDE-F	1	1/P							
25	41316090000	COVER-INSIDE-R	1	1/P							
26	41316101000	ROLL-TRANS-IDLE	6	1/P							
27	41316103000	SPR-IDLE	6	1/P							
28	41316100000	GUIDE-PAPER-IN	1	1/P							
29	41316102000	SPL-GUIDE-IN	2	1/P							
30	41316104000	LBL-ADU-OPEN	1	5/P							
51	4842042075	TBIDS3012MSCR1A	1	50/P							
52	4842080198	ZPAN30*08MSZN3C	4	50/P							
53	4842041808	TBIDS-30*08-3C	8	50/P							
54	4842040846	PTBR30*08MSZN3A	2	50/P							
55	4842040687	TBID4008MSZN3A	4	50/P							
56	4842040683	TBID30*06MSZN3A	9	50/P							



ITEM NO.	PARTS NO.	PARTS NAME	Q'TY / PAGE	Q'TY / PACK	PIR	BSI NO.	TO	FROM	SERIAL NO.	REMARKS	C
1	41316063000	SPE-069-090-399	1	1/P							
2	41316035000	ARM-JOINT	1	1/P							
3	41316037000	COLLOR-JOINT	1	5/P							
4	41316036000	GEAR-08S024-06	2	1/P							
5	41316038000	PIN-JOINT	1	1/P							
6	41316034000	GEAR-08S018-06	1	1/P							
7	41316032000	GEAR-08S18-06CL	2	1/P							
8	4400802070	BUSH-6L	3	5/P							
9	4407972860	STOP-RING-6-5	4	5/P							
10	41316028000	ROLL-TRANS-U	1	1/KP							
11	4843391656	WIRE/B-SKB-1M	4	5/P							
12	4401983080	SZ-FED-210	2	1/C							
13	41316254000	WH-ADU-FED-U	1	1/P							
14	41316026000	GUIDE-PAPER-U	1	1/P							
15	4407734980	BUSH-6-GCB	3	5/P							
16	41316025000	FRAME-F-ADU	1	1/P							
17	4842416026	GROMET-EHP-6U	4	5/P							
18	41316021000	K-FRM-R-ADU	1	1/P							
19	41316029000	ROLL-TRANS-C	1	1/KP							
20	4843391721	PWZ-KGLS-24RTV0	4	5/P							
21	41316252000	WH-ADU-FED-L	1	1/P							
22	4842904019	HPIN20/08SUSH7	2	50/P							
23	41317050000	PLY/T-2GT020-6F	2	1/P							
24	41316033000	BLT/T-282-2GT-5	1	1/P							
25	41316027000	GUIDE-PAPER-L	1	1/P							
26	41316030000	ROLL-TRANS-L	1	1/KP							
27	41316045000	K-BRKT-MOT-L	1	1/P							
28	41316039000	GG08S014/08S044	2	1/P							
29	41316050000	K-M/P-ADU-AW56	2	1/C							
30	41316207000	PWA-F-ADU-520-3	1	1/SB							
31	41316253000	WH-PFC-ADU-2	1	1/P							
32	41316251000	WH-ADU-CVSW	1	1/P							
33	41316041000	K-BRKT-MOT-U	1	1/P							
51	4400662390	SCREW-CASET	2	10/P							
52	4842040846	PTBR30*08MSZN3A	1	50/P							
53	4842041799	SCREW-MR-M3-6	8	50/P							
54	4842040683	TBID30*06MSZN3A	1	450/P							
55	4842090312	ERR050SKZN3A	6	50/P							



ITEM NO.	PARTS NO.	PARTS NAME	Q'TY / PAGE	Q'TY / PACK	P	I	R	BSI NO.	TO	FROM	SERIAL NO.	REMARKS	C
0	41316207000	PWA-F-ADU-520-3	1	1/SB									
11	4843117251	IC-STK672-210	1	1/S									
12	4843117251	IC1 IC-STK672-210	1	1/S									
31	4843413760	IC2 CE-04WQ1H227MB	1	5/P									
32	4843413760	C1 CE-04WQ1H227MB	1	5/P									
33	4843413833	C2 CE-04WQ1C226MP	1	5/P									
34	4843413242	C3 CK-45F1H104ZY	1	10/P									
35	4843413242	C4 CK-45F1H104ZY	1	10/P									
36	4843413242	C5 CK-45F1H104ZY	1	10/P									
37	4843413242	C6 CK-45F1H104ZY	1	10/P									
38	4843413242	C7 CK-45F1H104ZY	1	10/P									
51	4843077095	C8 RD-Z2HL103JBF	1	10/P									
52	4843073684	R1 RD-1/4L472JF	1	10/P									
53	4843073684	R2 RD-1/4L472JF	1	10/P									
54	4843073684	R3 RD-1/4L472JF	1	10/P									
55	4843073684	R4 RD-1/4L472JF	1	10/P									
56	4843073688	R5 RD-1/4L103JF	1	10/P									
57	4843073658	R6 RD-Z2EL330JBF	1	10/P									
58	4843073658	R7 RD-Z2EL330JBF	1	10/P									
59	4843073663	R8 RD-Z2EL820JBF	1	10/P									
60	4843073684	R9 RD-1/4L472JF	1	10/P									
61	4843073684	R10 RD-1/4L472JF	1	10/P									
62	4843073684	R11 RD-1/4L472JF	1	10/P									
63	4843073684	R12 RD-1/4L472JF	1	10/P									
64	4843073688	R13 RD-1/4L103JF	1	10/P									
65	4843073658	R14 RD-Z2EL330JBF	1	10/P									
66	4843073658	R15 RD-Z2EL330JBF	1	10/P									
67	4843073663	R16 RD-Z2EL820JBF	1	10/P									
81	4843306203	R17 J-1-175487-5	1	5/P									
82	4843306192	CN211 J-0-175487-4	1	5/P									
83	4843306205	CN212 J-2-175487-3	1	5/P									
84	4843306191	CN213 J-0-175487-3	1	5/P									
85	4843307994	CN214 J-53324-0510	1	5/P									
86	4843307994	CN215 J-53324-0510	1	5/P									
87	4843306190	CN216 J-0-175487-2	1	5/P									
101	4407782660	CN217 JUMPER-WIRE-10	1	10/P									

ITEM NO.	PARTS NO.	PARTS NAME	Q'TY / PAGE	Q'TY / PACK	P	I	R	BSI NO.	TO	FROM	SERIAL NO.	REMARKS	C
102	4407782660	JP1 JUMPER-WIRE-10	1	10/P									
103	4407782660	JP2 JUMPER-WIRE-10	1	10/P									
104	4407782660	JP3 JUMPER-WIRE-10	1	10/P									
105	4407782660	JP4 JUMPER-WIRE-10	1	10/P									
106	4407782660	JP5 JUMPER-WIRE-10	1	10/P									
107	4407782660	JP6 JUMPER-WIRE-10	1	10/P									
108	4407782660	JP7 JUMPER-WIRE-10	1	10/P									
109	4407782660	JP8 JUMPER-WIRE-10	1	10/P									
110	4407782660	JP9 JUMPER-WIRE-10	1	10/P									
111	4407782660	JP10 JUMPER-WIRE-10	1	10/P									
		JP11											

PARTS NO.	PARTS NAME	Q'TY / PAGE	Q'TY / PACK	PAGE	ITEM NO.	PIR	B S I NO.	SERIAL NO.	REMARKS	LOCATION	C
41316021000	K-FRM-R-ADU	11/P	11/P	2	18						
41316025000	FRAME-F-ADU	11/P	11/P	2	16						
41316026000	GUIDE-PAPER-U	11/P	11/P	2	14						
41316027000	GUIDE-PAPER-L	11/P	11/P	2	25						
41316028000	ROLL-TRANS-U	11/KP	11/KP	2	10						
41316029000	ROLL-TRANS-C	11/KP	11/KP	2	19						
41316030000	ROLL-TRANS-L	11/KP	11/KP	2	26						
41316032000	GEAR-08S18-06CL	21/P	21/P	2	7						
41316033000	BLT/T-282-2GT-5	11/P	11/P	2	24						
41316034000	GEAR-08S018-06	11/P	11/P	2	6						
41316035000	ARM-JOINT	11/P	11/P	2	2						
41316036000	GEAR-08S024-06	21/P	21/P	2	4						
41316037000	COLLOR-JOINT	15/P	15/P	2	3						
41316038000	PIN-JOINT	11/P	11/P	2	5						
41316039000	GG08S014/08S044	21/P	21/P	2	28						
41316041000	K-BRKT-MOT-U	11/P	11/P	2	33						
41316045000	K-BRKT-MOT-L	11/P	11/P	2	27						
41316050000	K-M/P-ADU-AW56	21/C	21/C	2	29						
41316051000	BRKT-WH-ADU-R	11/P	11/P	1	6						
41316055000	LEVER-LATCH-F	11/P	11/P	1	23						
41316056000	LEVER-LATCH-R	11/P	11/P	1	18						
41316057000	SHAFT-OPEN	11/P	11/P	1	21						
41316058000	LEVER-OPEN	11/P	11/P	1	20						
41316063000	SPE-069-090-399	11/P	11/P	2	1						
41316064000	SPE-068-070-241	11/P	11/P	1	22						
41316070000	BRKT-WIRE	11/P	11/P	1	16						
41316072000	WIRE-STP-ADU	11/P	11/P	1	13						
41316073000	BRKT-COV-WIRE-1	11/P	11/P	1	15						
41316074000	GUIDE-WIRE	11/P	11/P	1	14						
41316080000	CASE-ADU	11/PP	11/PP	1	11						
41316085000	COVER-INSIDE-F	11/P	11/P	1	24						
41316090000	COVER-INSIDE-R	11/P	11/P	1	25						
41316100000	GUIDE-PAPER-IN	11/P	11/P	1	28						
41316101000	ROLL-TRANS-IDLE	61/P	61/P	1	26						
41316102000	SPL-GUIDE-IN	21/P	21/P	1	29						
41316103000	SPR-IDLE	61/P	61/P	1	27						
41316104000	LBL-ADU-OPEN	15/P	15/P	1	30						
41316108000	K-BRKT-HINGE-F	11/P	11/P	1	8						
41316113000	K-BRKT-HINGE-R	11/P	11/P	1	3						
41316120000	BRKT-COV-WIRE-2	11/P	11/P	1	2						
41316121000	COV-HINGE-F	11/P	11/P	1	9						
41316122000	COV-HINGE-R	11/P	11/P	1	7						
41316125000	BRKT-SW	11/P	11/P	1	1						
41316126000	SNAP-PIN-10	15/P	15/P	1	10						
41316127000	BRKT-JOINT-STPR	11/P	11/P	1	5						
41316207000	PWA-F-ADU-520-3	11/SB	11/SB	2	30						
		11/SB	11/SB	3	0						
41316251000	WH-ADU-CVSW	11/P	11/P	2	32						
41316252000	WH-ADU-FED-L	11/P	11/P	2	21						
41316253000	WH-PFC-ADU-2	11/P	11/P	2	31						
41316254000	WH-ADU-FED-U	11/P	11/P	2	13						
41317050000	PLY/T-2GT020-6F	21/P	21/P	2	23						
4400662390	SCREW-CASET	210/P	210/P	2	51						
4400802070	BUSH-6L	35/P	35/P	2	8						
4401983080	SZ-FED-210	21/C	21/C	2	12						
4402859600	SP-CS3A-B2BA	11/D	11/D	1	12						
4407734980	BUSH-6-GCB	35/P	35/P	2	15						
4407782660	JUMPER-WIRE-10	110/P	110/P	3	101					JP1	
		110/P	110/P	3	102					JP2	
		110/P	110/P	3	103					JP3	
		110/P	110/P	3	104					JP4	
		110/P	110/P	3	105					JP5	
		110/P	110/P	3	106					JP6	
		110/P	110/P	3	107					JP7	
		110/P	110/P	3	108					JP8	
		110/P	110/P	3	109					JP9	
		110/P	110/P	3	110					JP10	
		110/P	110/P	3	111					JP11	
4407972860	STOP-RING-6-5	45/P	45/P	2	9						
4842040683	TBID30*06MSZN3A	950/P	950/P	1	56						

PARTS NO.	PARTS NAME	Q'TY / PAGE	Q'TY / PACK	PAGE	ITEM NO.	PIR	B S I NO.	SERIAL NO.	REMARKS	LOCATION	C
		14	50/P	2	54						
4842040687	TBID4008MSZN3A		450/P	1	55						
4842040846	PTBR30*08MSZN3A		250/P	1	54						
			150/P	2	52						
4842041799	SCREW-MR-M3-6		850/P	2	53						
4842041808	TBIDS-30*08-3C		850/P	1	53						
4842042075	TBIDS3012MSCR1A		150/P	1	51						
4842080198	ZPAN30*08MSZN3C		450/P	1	52						
4842090312	ERR050SKZN3A		650/P	2	55						
4842416026	GROMET-EHP-6U		45/P	2	17						
4842904010	NPIN20/16SUS		150/P	1	19						
4842904019	HPIN20/08SUSH7		250/P	2	22						
4843073658	RD-Z2EL330JBF		110/P	3	57					R7	
			110/P	3	58					R8	
			110/P	3	65					R15	
			110/P	3	66					R16	
4843073663	RD-Z2EL820JBF		110/P	3	59					R9	
			110/P	3	67					R17	
4843073684	RD-1/4L472JF		110/P	3	52					R2	
			110/P	3	53					R3	
			110/P	3	54					R4	
			110/P	3	55					R5	
			110/P	3	60					R10	
			110/P	3	61					R11	
			110/P	3	62					R12	
			110/P	3	63					R13	
4843073688	RD-1/4L103JF		110/P	3	56					R6	
			110/P	3	64					R14	
4843077095	RD-Z2HL103JBF		110/P	3	51					R1	
4843117251	IC-STK672-210		11/S	3	11					IC1	
			11/S	3	12					IC2	
4843306190	J-0-175487-2		15/P	3	87					CN217	
4843306191	J-0-175487-3		15/P	3	84					CN214	
4843306192	J-0-175487-4		15/P	3	82					CN212	
4843306203	J-1-175487-5		15/P	3	81					CN211	
4843306205	J-2-175487-3		15/P	3	83					CN213	
4843307994	J-53324-0510		15/P	3	85					CN215	
			15/P	3	86					CN216	
4843390942	BD/W-EDS-2		110/P	1	4						
4843391240	BD/W-EDS-2323U		25/P	1	17						
4843391656	WIRE/B-SKB-1M		45/P	2	11						
4843391721	PWZ-KGLS-24RTVO		45/P	2	20						
4843413242	CK-45F1H104ZY		110/P	3	34					C4	
			110/P	3	35					C5	
			110/P	3	36					C6	
			110/P	3	37					C7	
			110/P	3	38					C8	
4843413760	CE-04WQ1H227MB		15/P	3	31					C1	
			15/P	3	32					C2	
4843413833	CE-04WQ1C226MP		15/P	3	33					C3	

TOSHIBA

TOSHIBA TEC CORPORATION

1-1, KANDA NISHIKI-CHO, CHIYODA-KU, TOKYO, 101-8842 JAPAN